

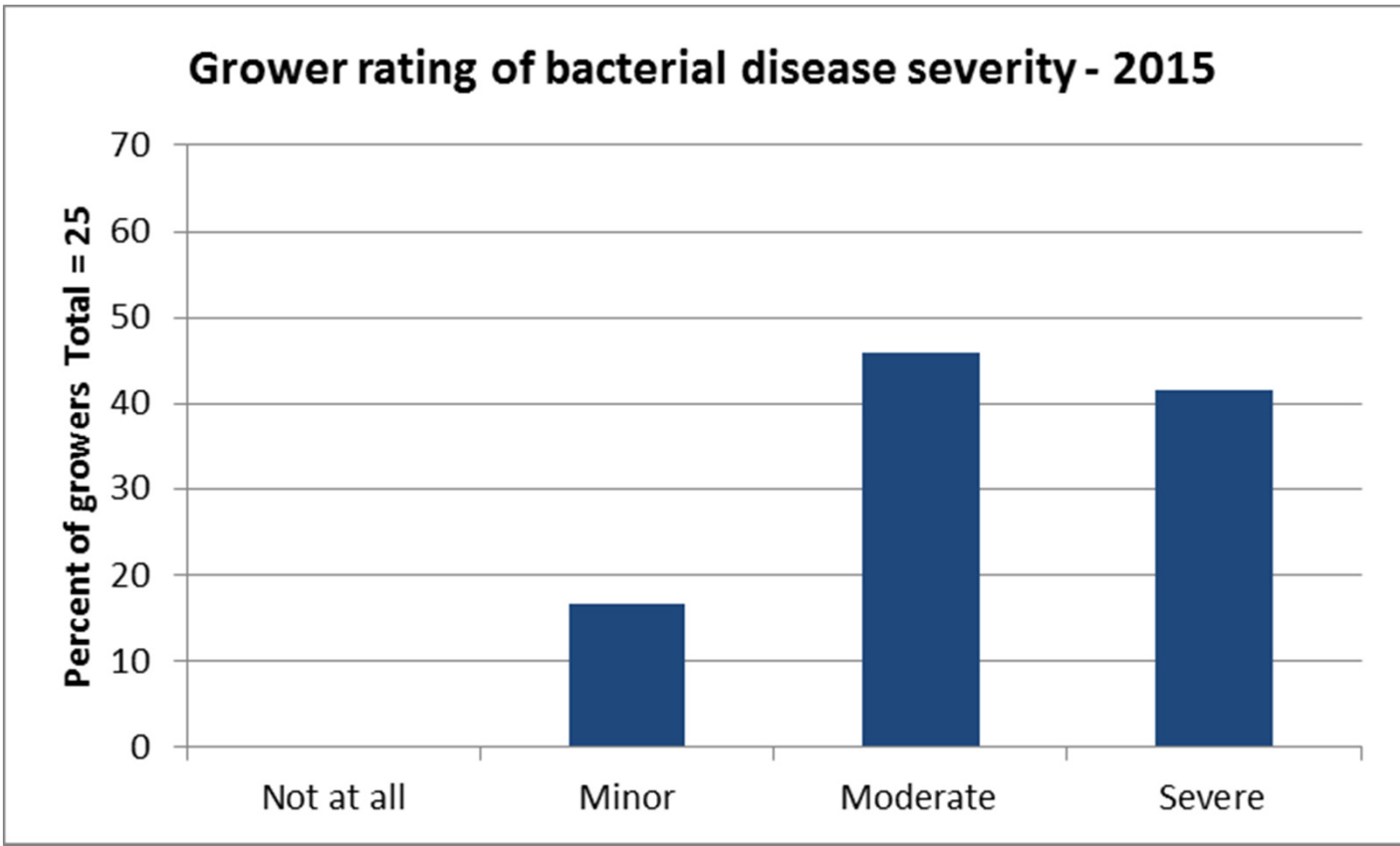
Ontario Processing Tomato Grower Bacterial Disease Survey

2015

J. LeBoeuf, OMAFRA; C. Trueman, RC-UG

Processing Tomato Grower Bacterial Disease Survey 2015

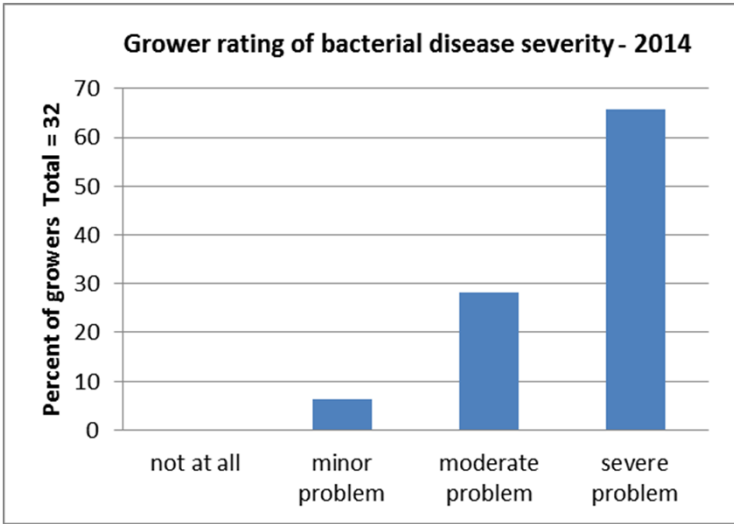
- Conducted November-December 2015
- Twenty-five grower responses
- 2014 and 2015 responses cannot be compared exactly, due to differences in question wording and format, but where similar, results for both are shown for interest



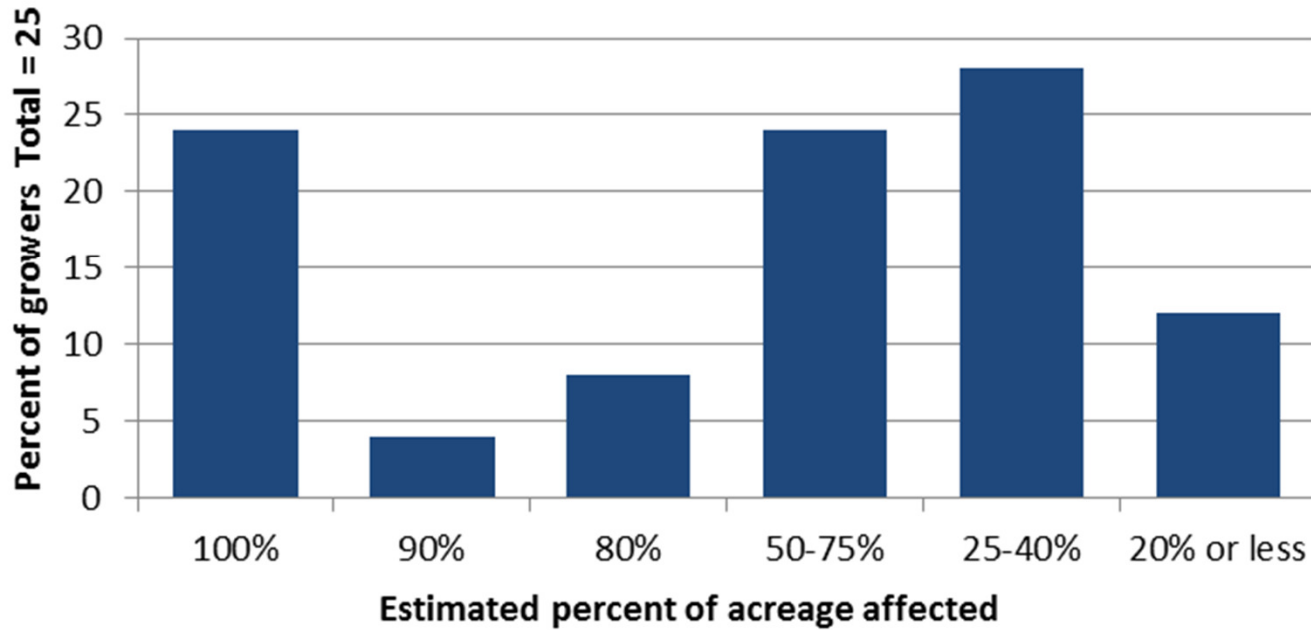
2015 question: Was bacterial disease a problem in your tomatoes this year?

2014 question: Was bacterial spot a problem in your tomatoes this year?

The percentage of growers reporting severe bacterial disease was quite a bit lower in 2015. A higher percentage rated severity as moderate or minor in 2015. No-one chose “not at all” in either season. Note that in 2014, the question specified spot and in 2015, bacterial disease in general.



Grower estimate of % of acreage affected by bacterial disease - 2015

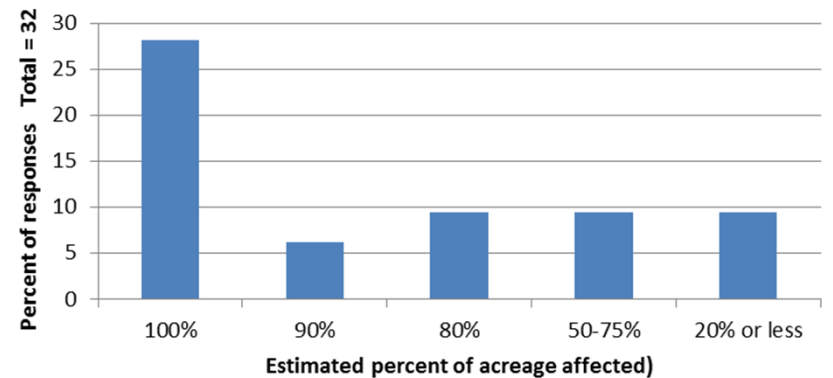


*2015 question:
Please estimate what % of your tomato acreage had bacterial disease symptoms at any point this season.*

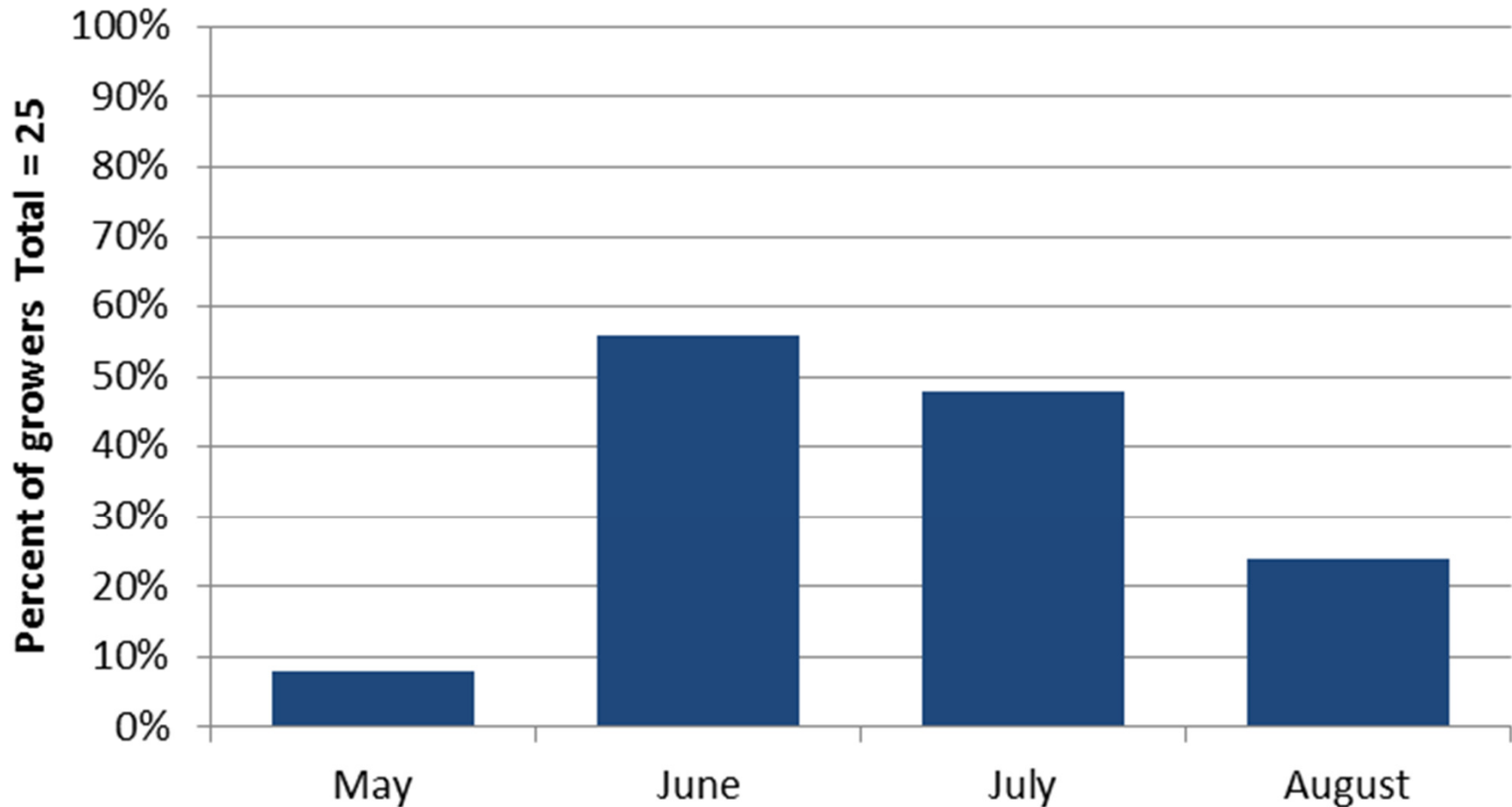
2014 question: How widespread are bacterial disease problems in your tomatoes this year? Eg. Estimated % of acreage, present in certain fields, ...certain blocks...

Because of a difference in how the questions were worded, all respondents provided a percent estimate in 2015, but only about 2/3 did in 2014. This makes it difficult to compare the two years.

Grower estimate of % of acreage affected by bacterial disease - 2014

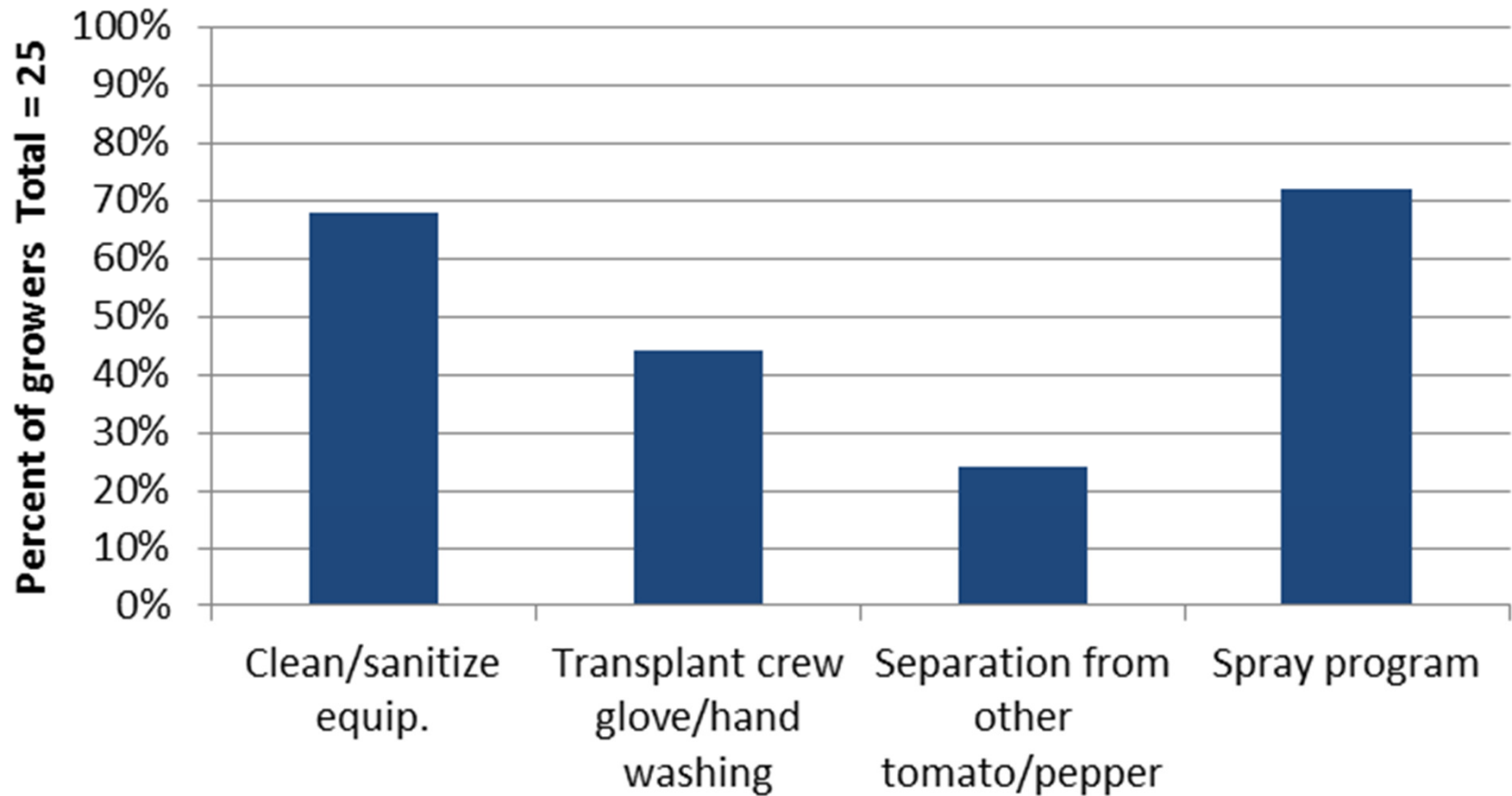


First appearance of bacterial disease symptoms - 2015



June and July seemed to be the most active months for bacterial disease symptoms to appear. Some growers reported bacterial disease showing up in both June and July, probably depending on the field.

Grower management practices - 2015



Bacterial disease products mentioned: copper (4); copper and Actigard (2).

Over 80% were using a copper-based spray program in the 2014 survey. The 2015 survey did not specify “copper-based”, but asked if a bacterial disease spray program was being used, but some growers who answered yes were using only fungicides.

Other grower management practices mentioned - 2015:

- Gloves changed daily or between varieties
- Sanitation of transplant highway trailer
- Not returning empty racks until end of season
- No bacterial disease products used
- Washed plug trailer after every load
- Washed transplanter between varieties
- Used disposable gloves

The 2015 survey results indicate that some of the management practices in the new bacterial disease management recommendations are being adopted.

In 2015, over 65% reported cleaning/sanitizing equipment. In 2014, less than 40% reported some form of cleaning. Due to differences in wording of the questions, though, direct comparisons cannot be made.

